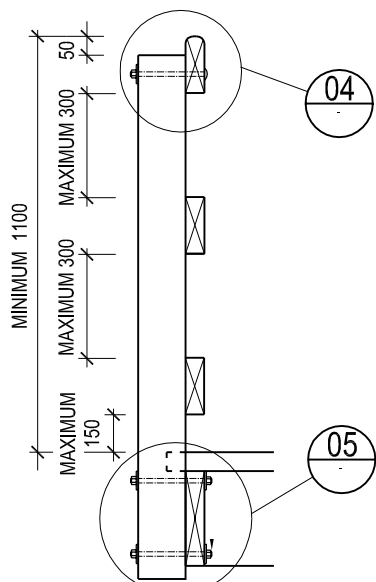
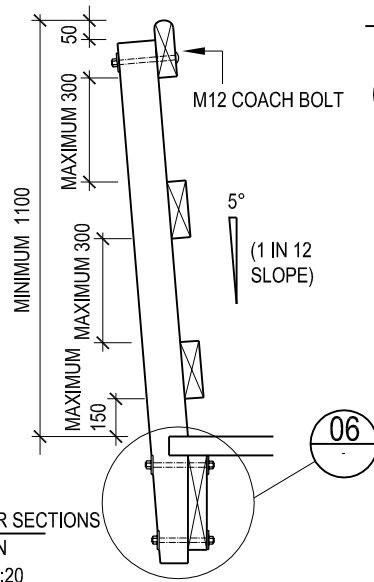


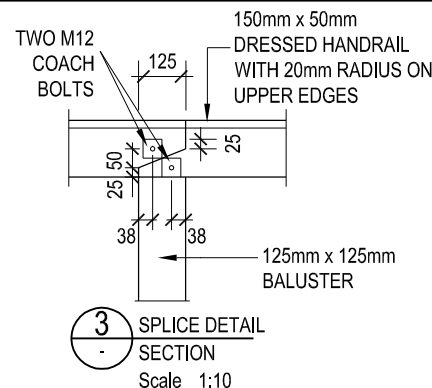
1 TYPICAL TYPE B  
ELEVATION  
Scale 1:20



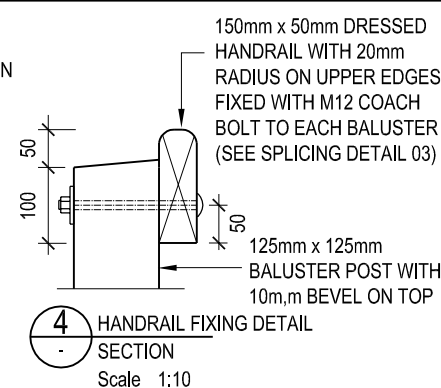
2 BARRIER SECTIONS  
SECTION  
Scale 1:20



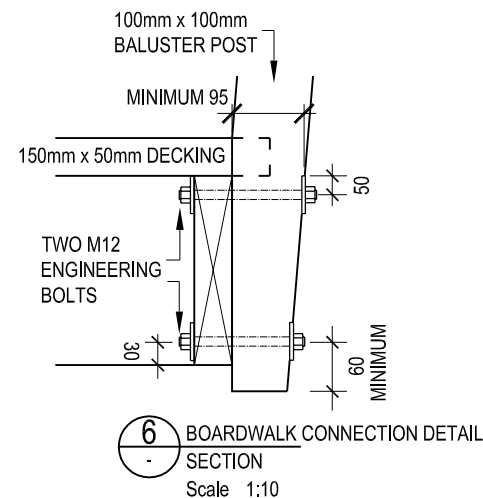
5 BOARDWALK CONNECTION DETAIL  
SECTION  
Scale 1:10



3 SPLICE DETAIL  
SECTION  
Scale 1:10



4 HANDRAIL FIXING DETAIL  
SECTION  
Scale 1:10



6 BOARDWALK CONNECTION DETAIL  
SECTION  
Scale 1:10

## NOTES

1. TYPE 'A' OR 'B' BARRIER MAY BE REQUIRED WHERE THE FALL HEIGHT IS GREATER THAN 1.5 METRES. REFER TO SHEETS 9 AND 10 FOR TYPE 'A' AND 'B' BARRIER DETAILS.
2. TIMBER GRADE:
  - ALL SAWN TIMBER FOR BEARERS AND JOISTS TO BE G8 OR VSG8 GRADE OR BETTER.
  - ALL POSTS TO BE NZS605
  - ALL DECKING TO BE No.1 FRAMING.
3. TIMBER TREATMENT:
  - ROUND OR SAWN PILES OR POLES IN CONTACT WITH GROUND TO BE H5.
  - SAWN TIMBER NOT IN CONTACT WITH GROUND TO BE H3.2.
  - SAWN TIMBER IN CONTACT WITH GROUND TO BE H5.
  - TREATMENT SHALL COMPLY WITH THE CURRENT REQUIREMENTS OF THE TIMBER PRESERVATION COUNCIL. ALL TIMBER SHALL BE BRANDED WITH THE APPROPRIATE WOODMARK. IT IS PREFERRED THAT TIMBER BE TREATED AT LEAST 2 MONTHS PRIOR TO USE.
4. NAILS:
  - GENERAL STRUCTURAL USE 100 x 4mm FH.
  - ALL NAILS SHALL BE HOT DIPPED GALVANISED.
5. BOLTS:
  - BOLTS SHALL BE M16 HOT-DIPPED GALVANISED ENGINEERS BOLTS FITTED WITH 65 x 65 x 5mm GALVANISED SQUARE WASHERS BOTH ENDS. ALL GALVANISED BOLTS IN CONTACT WITH TREATED TIMBER SHALL BE PROTECTED USING GP GREASE IN PRE-GREASED HOLES.
  - IN MARINE SPRAY LOCATIONS USE 316 STAINLESS STEEL BOLTS.